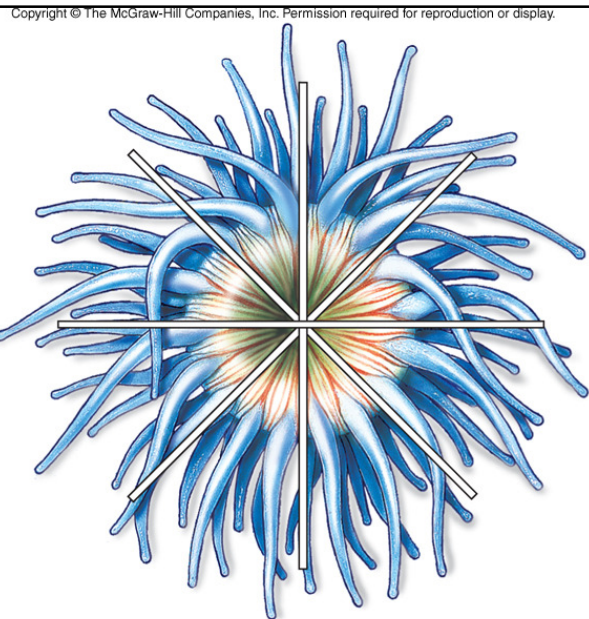


# Lab Presentation 12 and 13

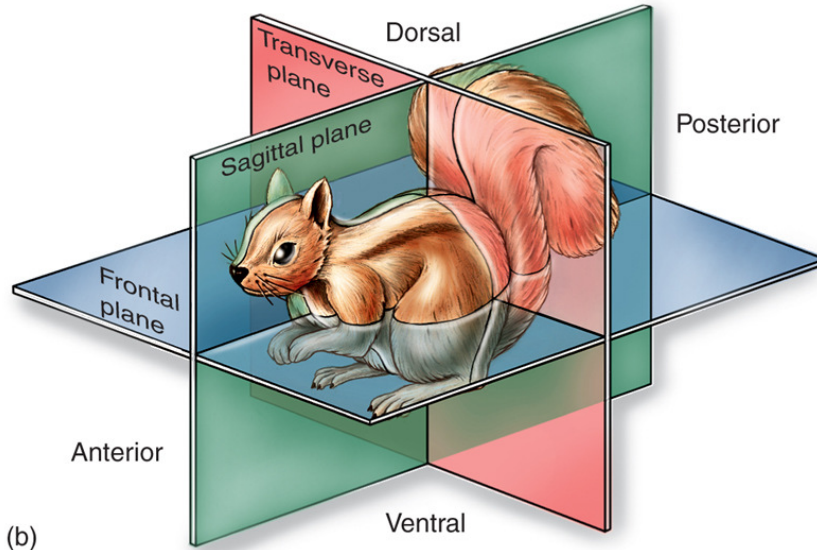
Porifera, Cnidaria, Nematoda,  
Annelida, Platyhelminthes



(a)

Radial Symmetry

Copyright © The McGraw-Hill Companies, Inc. Permission required for reproduction or display.



(b)

## Bilateral Symmetry

Copyright © The McGraw-Hill Companies, Inc. Permission required for reproduction or display.

## Porifera: Sponge



(a)

© Alamy Images, Ed Reschke

Copyright © The McGraw-Hill Companies, Inc. Permission required for reproduction or display.

## Porifera: Sponge

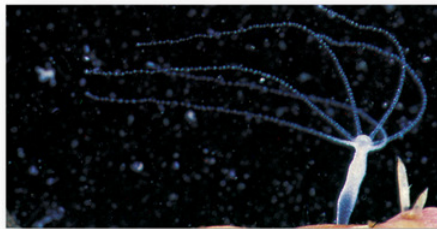


(b)

© Royalty Free/Corbis

## Cnidaria

Copyright © The McGraw-Hill Companies, Inc. Permission required for reproduction or display.



(a)

© Gwen Fidler/Tom Stack & Associates



(c)

© Royalty-Free/Corbis



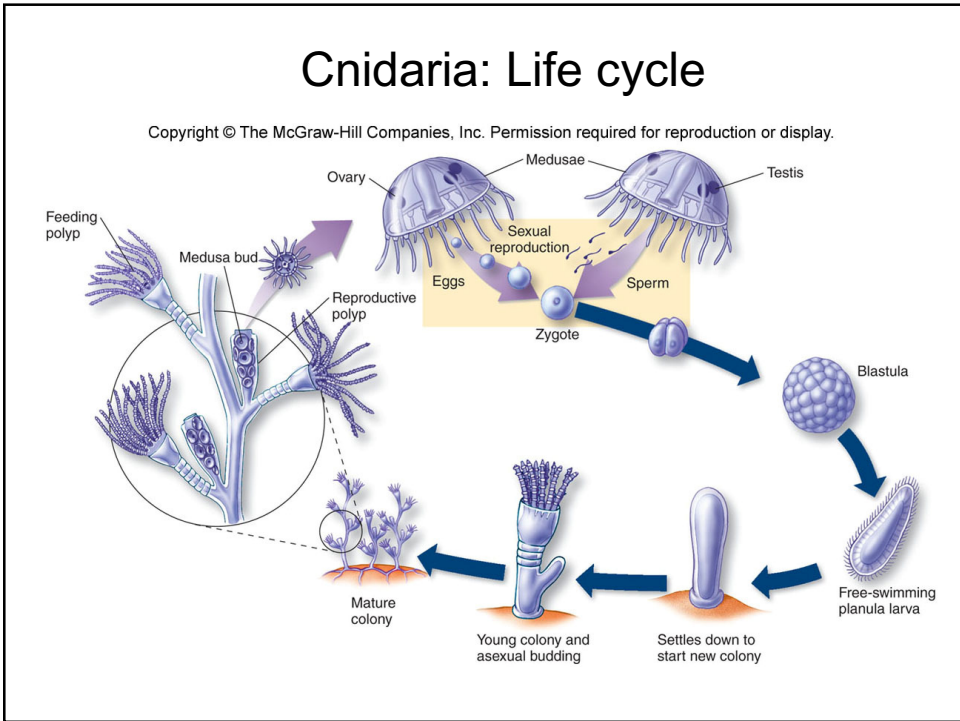
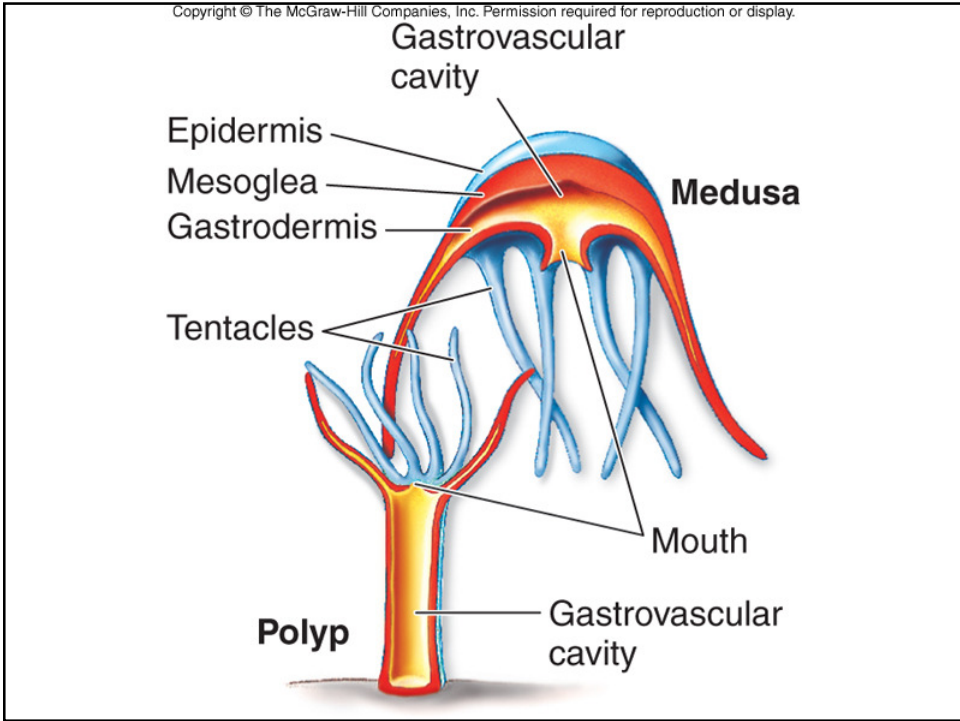
(b)

© Royalty-Free/Corbis

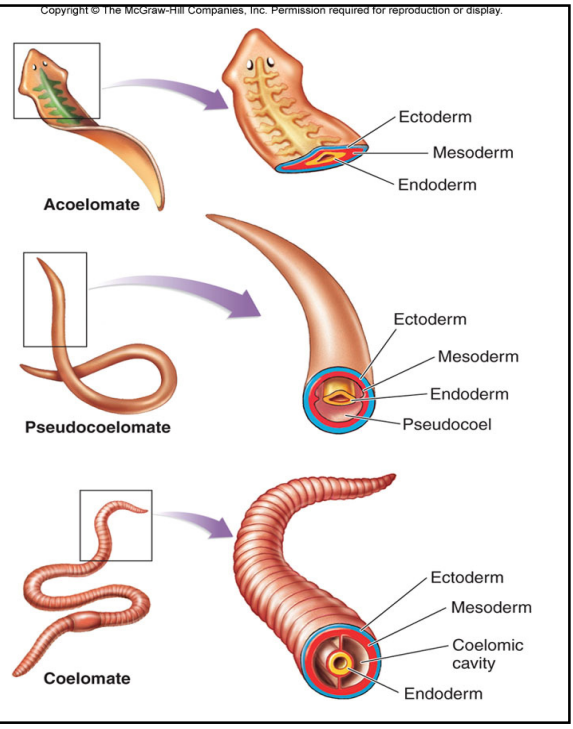


(d)

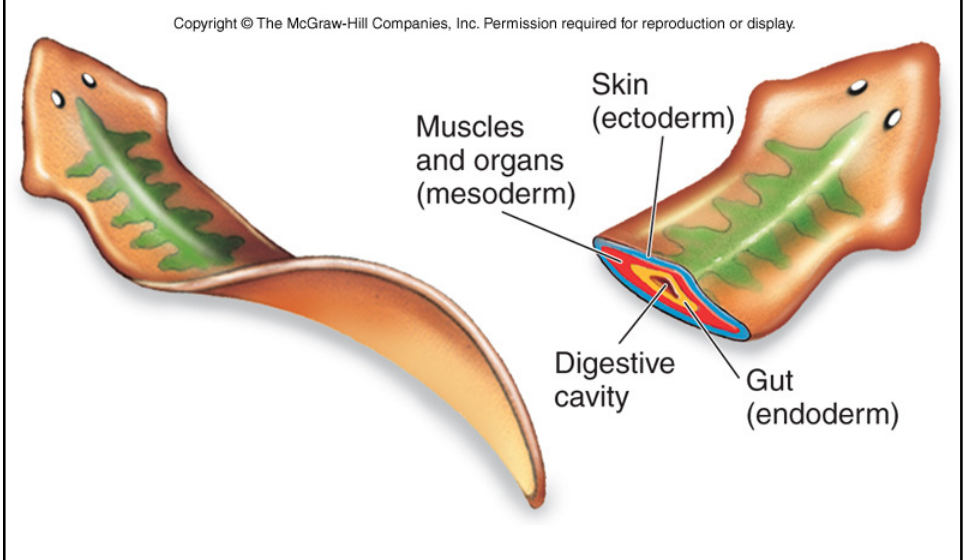
© Corbis/Vol. 64



# Body Cavity Types



# Platyhelminthes: The Flatworms



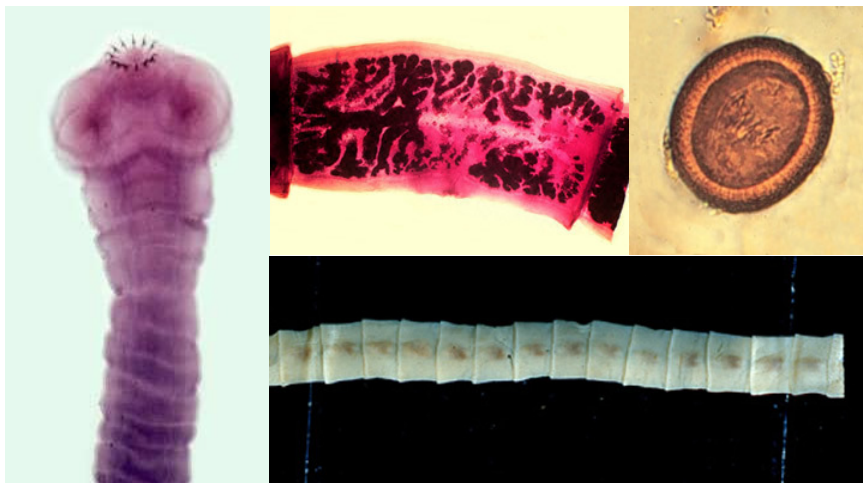
Platyhelminthes:  
The Flatworms

Planarians



(a)

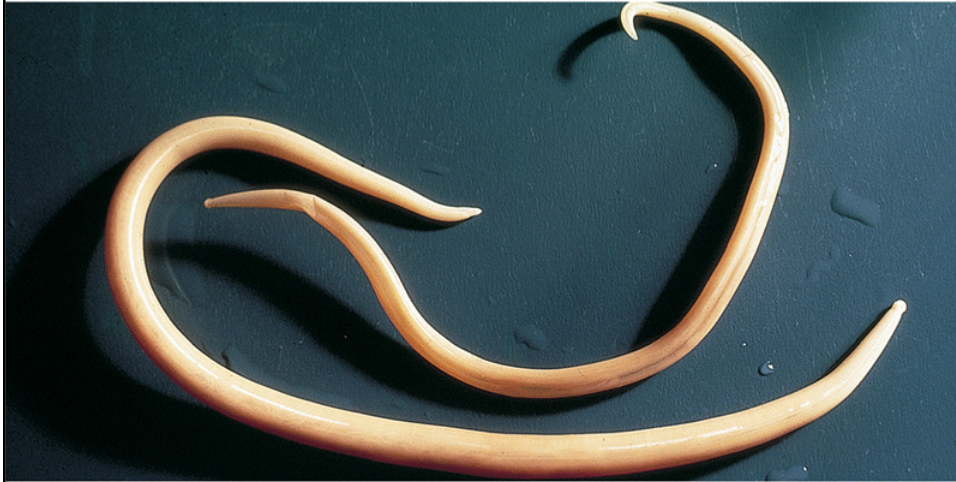
© T.E. Adams/Visuals Unlimited



Platyhelminthes: Tapeworm

## Nematoda: Roundworms

Copyright © The McGraw-Hill Companies, Inc. Permission required for reproduction or display.



(a)

© Larry Jensen/Visuals Unlimited

## Annelida: Segmented Worms

Copyright © The McGraw-Hill Companies, Inc. Permission required for reproduction or display.

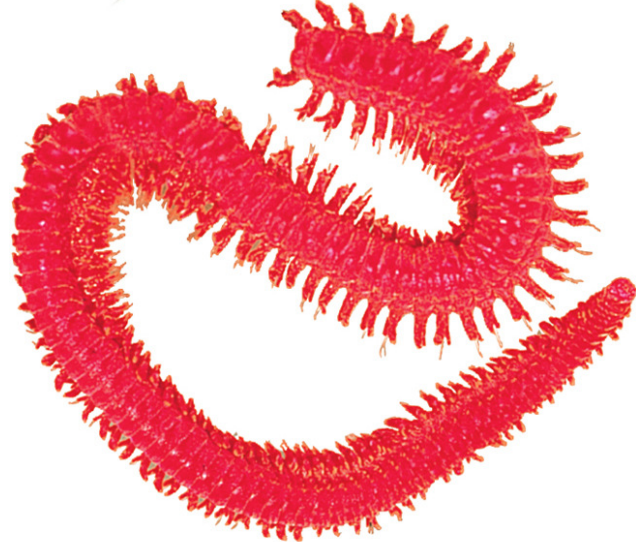


(a)

© David M. Dennis/Tom Stack & Associates

# Annelida: Segmented Worms

Copyright © The McGraw-Hill Companies, Inc. Permission required for reproduction or display.



© Kjell Sandved/Butterfly Alphabet